

Ohisto_surfaces (ImageJ macro)

1/2

Macro for calculating empty surfaces on histological slices (ex: tubules in a kidney).

INPUT:

Structure of the data to be analysed:

- Color images (tif, red, green, blue).

Modifications to do within the script:

- Values the variable "myscale" must be calculated with calibrated images (in pixels for 1000 μm)
- The default values are for Leica DMD108

OUTPUT:

- In "Summary" window: Slice name (file), Count of the number of empty surfaces, Total area, Average size of each surface, Area fraction (the percentage of non-zero pixels).

Ohisto_surfaces (ImageJ macro)

Step 1: Select zoom

2/2

Step 2: Choose an image

Step 7: Three choices:

- Change zoom + OK
- OK
- Cancel

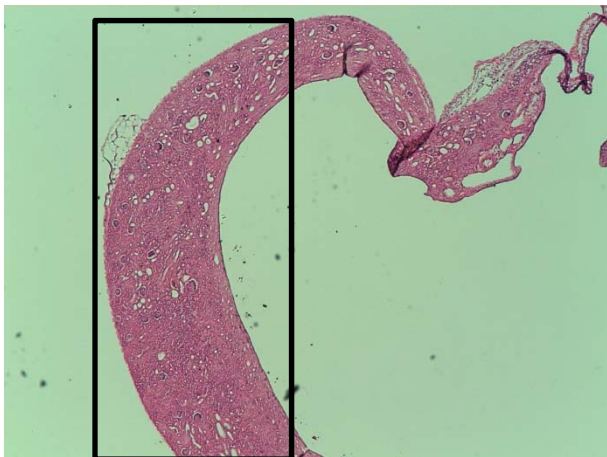
End of analysis
Formatted results
are in "Summary"
window



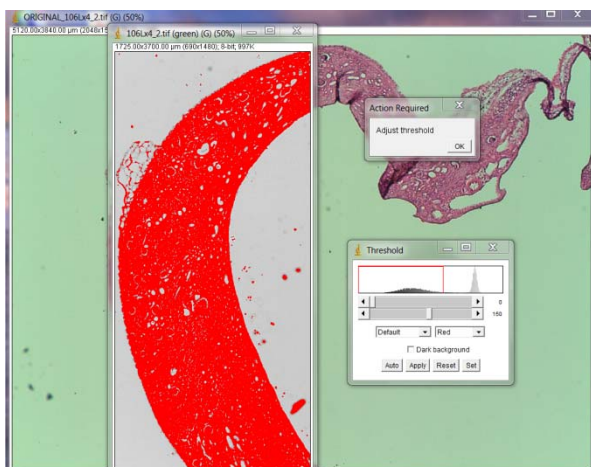
Step 6: « Analyze Particles »

File	Edit	Font					
Slice	Count	Total Area	Average Size	Area Fraction	Perim.		
106Lx4_2.tif (green)	537	168950.000	314.432	6.1	61.807		
104Lx4_2.tif (green)	154	122950.000	97.227	0.4	38.950		
107Sx4_3.tif (green)	705	135675.000	192.447	5.2	47.179		

Step 3: Crop image



Step 4: Adjust threshold



Step 5: Select the areas to analyse

